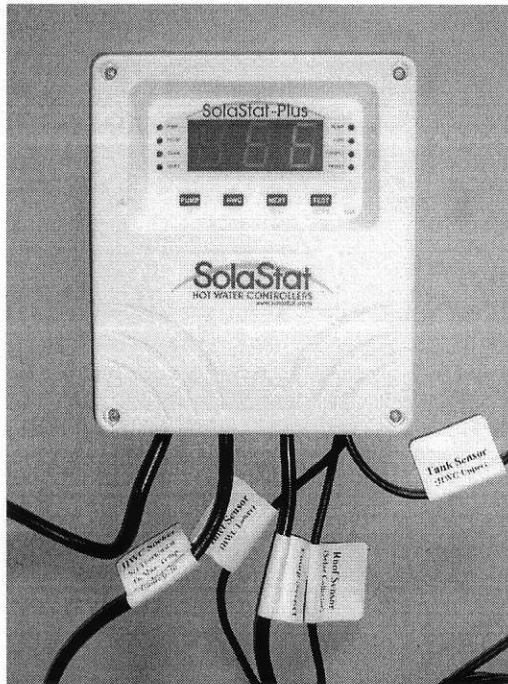
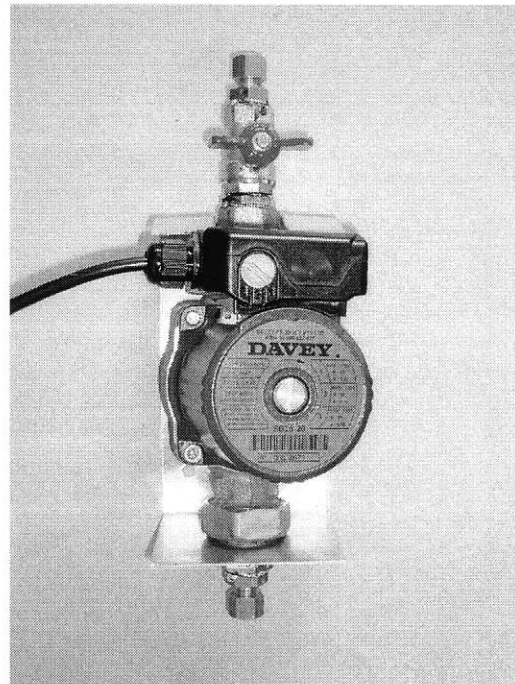


Ancillary Components



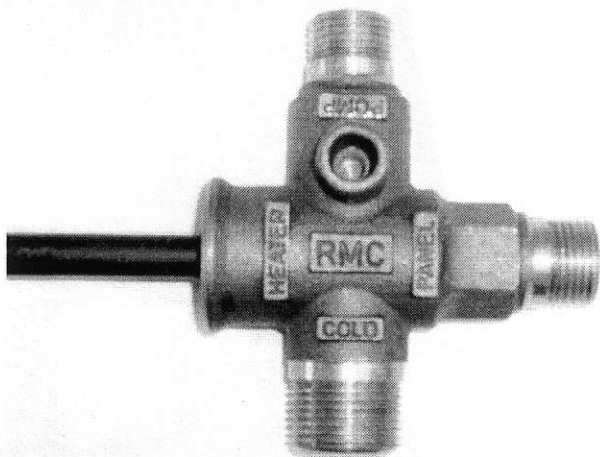
Solarstat Plus 2 Controller

Controls temp / pump and the element.



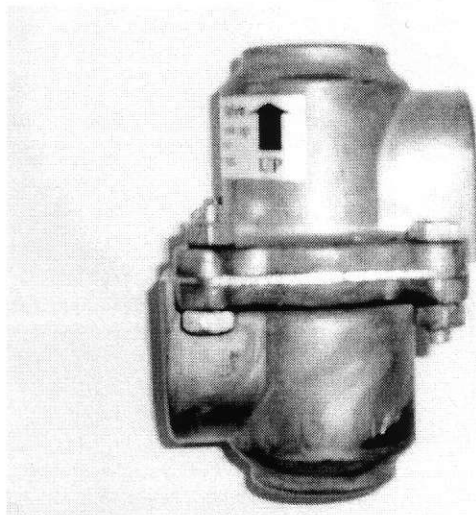
Typical Circulating Pump

Pumping water circulating from storage cylinder through solar panel and back to cylinder. Best results set to flow rate no.2



Typical 5 Port Valve

For use in other cylinders where there are no solar heating connections.



Typical Pulse Flow Valve

For use in under or over piping systems. Can also be used in passive solar systems to improve flow.